

## Leaders notes for the butterfly trail

- Please ensure participants are dressed appropriately for the activity.
- We would recommend that leaders accompany children under 7 years of age on the activity, gently offering suggestions of where to look.
- Participants aged 7 upwards should be able to find the butterflies independently but you will need to set boundaries based on where they are located. We would recommend they go in pairs or small groups.
- The butterflies are not placed in numerical order around the site.

You will find the butterflies around the following locations.

1	Door of big barn	9	Ranger Den
2	Fence panel near Venture House playroom exit	10	Bench on playground
3	Wooden fence near Kinder View	11	The Cabin
4	The workshop	12	On Tree near Werneth lodge
5	Ash Centre	13	Caravan decking
6	Holly Shelter	14	Tree near Venture House car park
7	Toilet block	15	Wood shed
8	Camp fire circle	16	Tree near Ash Centre and Toilet block

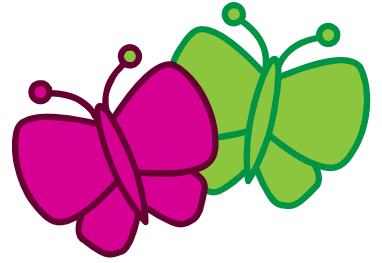
Some suggestions for the trail:

1. Use the sheet on the next page to simply look for each number and write down its colour.
2. Get the girls to find out how many different colours there are.
3. Divide girls into teams. Give them a specific colour to look for from the list below and get them to come back with the two corresponding numbers. There are various shades of green for example, so this should burn off quite a lot of energy until they give you the right number.
4. Using a digital camera or camera phone get them to take a selfie with the butterfly with their age on.

Colours/numbers for activity 3:



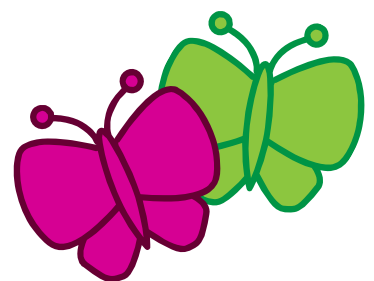
If you think of some other uses, please e-mail [outdoors@girlguidingmanchester.org.uk](mailto:outdoors@girlguidingmanchester.org.uk) so we can add them to the list.



Follow our butterfly trail – Try to find all 16 and write own what colour they are

- 1 \_\_\_\_\_
- 2 \_\_\_\_\_
- 3 \_\_\_\_\_
- 4 \_\_\_\_\_
- 5 \_\_\_\_\_
- 6 \_\_\_\_\_
- 7 \_\_\_\_\_
- 8 \_\_\_\_\_

- 9 \_\_\_\_\_
- 10 \_\_\_\_\_
- 11 \_\_\_\_\_
- 12 \_\_\_\_\_
- 13 \_\_\_\_\_
- 14 \_\_\_\_\_
- 15 \_\_\_\_\_
- 16 \_\_\_\_\_



Follow our butterfly trail – Try to find all 16 and write own what colour they are

- 1 \_\_\_\_\_
- 2 \_\_\_\_\_
- 3 \_\_\_\_\_
- 4 \_\_\_\_\_
- 5 \_\_\_\_\_
- 6 \_\_\_\_\_
- 7 \_\_\_\_\_
- 8 \_\_\_\_\_

- 9 \_\_\_\_\_
- 10 \_\_\_\_\_
- 11 \_\_\_\_\_
- 12 \_\_\_\_\_
- 13 \_\_\_\_\_
- 14 \_\_\_\_\_
- 15 \_\_\_\_\_
- 16 \_\_\_\_\_